

CHESTNUT LANDING - BUILDING B

MEDICAL/PROFESSIONAL SPACE AVAILABLE FOR BUILD OUT



**EXCLUSIVELY LISTED
BY:**

STEVE GRONOW

810-599-5147

Steve@chestnutrealestate.com



Chestnut Real Estate | 810-599-3984 | ChestnutRealEstate.com
6253 Grand River, Ste 800 Brighton MI 48114

MEDICAL/PROFESSIONAL SPACE AVAILABLE FOR BUILD OUT



OVERVIEW:

Join Medical and Chestnut offices with new construction medical/professional office plaza ready for build out. Space available is from 2,000 SF up to 16,000 SF. New facility with professional on-site management. 1st class construction and great presence on Grand River in Brighton. Ample parking located 1.5 miles east of the Latson I-96 interchange and just west of Bordines Nursery.

Chestnut Real Estate | 810-599-3984 | ChestnutRealEstate.com
6253 Grand River, Ste 800 Brighton MI 48114

MEDICAL/PROFESSIONAL SPACE AVAILABLE FOR BUILD OUT



TENANT INFORMATION:

- Excellent Grand River visibility
- Great location between Howell & Brighton
- \$18/SF Triple Net
- \$4.75/SF Cam
- Landlord contributes \$25/SF for buildout with minimum 5 year lease
- Ample Parking

MEDICAL/PROFESSIONAL SPACE AVAILABLE FOR BUILD OUT



Chestnut Real Estate | 810-599-3984 | ChestnutRealEstate.com
6253 Grand River, Ste 800 Brighton MI 48114

MEDICAL/PROFESSIONAL SPACE AVAILABLE FOR BUILD OUT



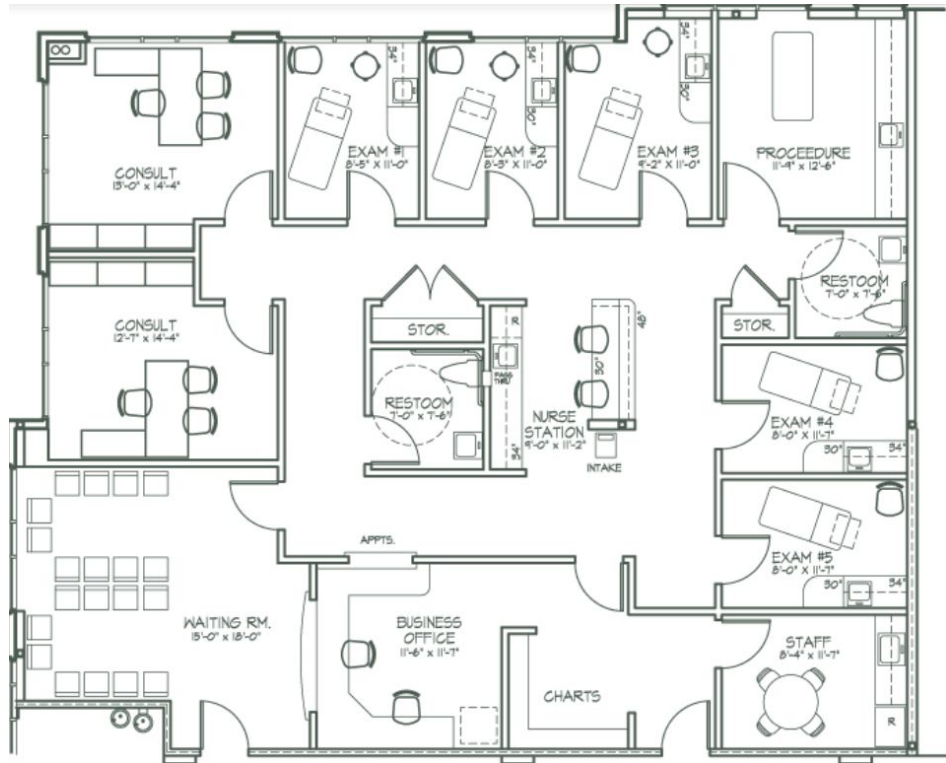
Chestnut Real Estate | 810-599-3984 | ChestnutRealEstate.com
6253 Grand River, Ste 800 Brighton MI 48114

MEDICAL/PROFESSIONAL SPACE AVAILABLE FOR BUILD OUT



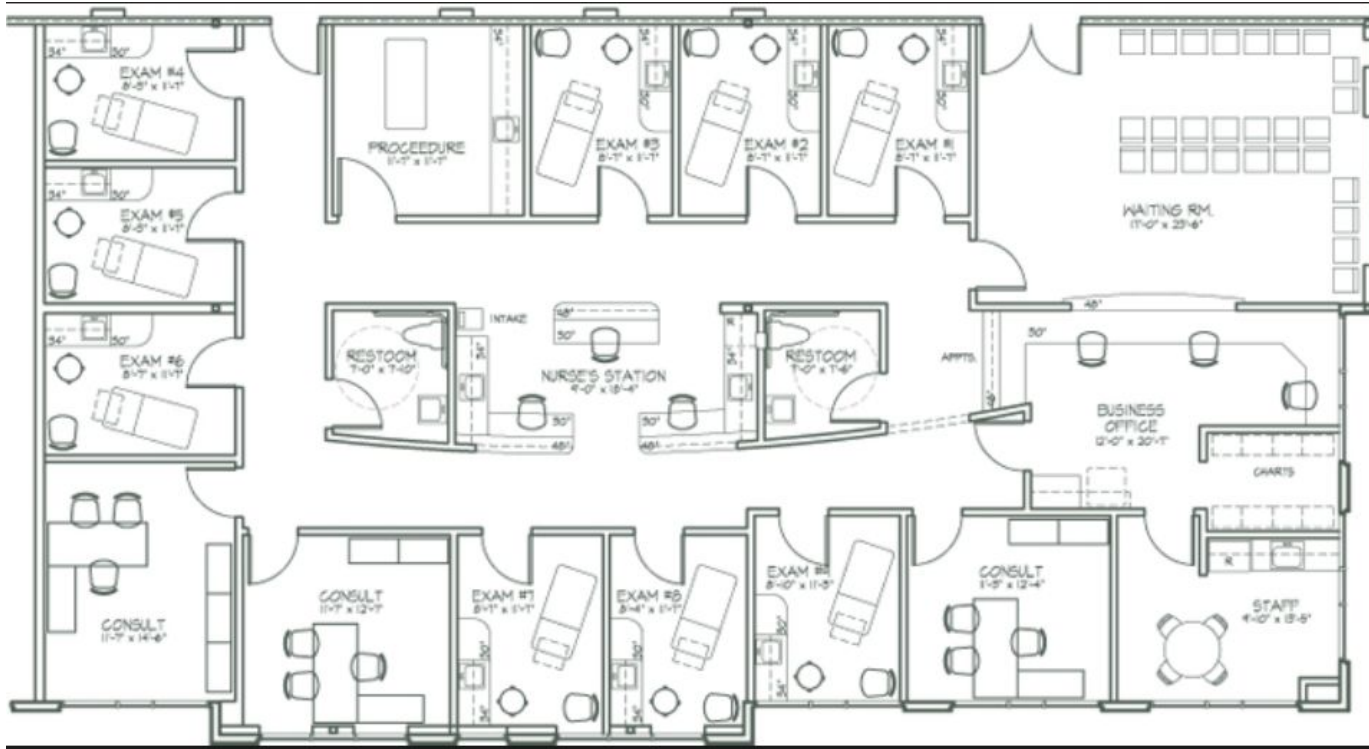
Chestnut Real Estate | 810-599-3984 | ChestnutRealEstate.com
6253 Grand River, Ste 800 Brighton MI 48114

MEDICAL/PROFESSIONAL SPACE AVAILABLE FOR BUILD OUT



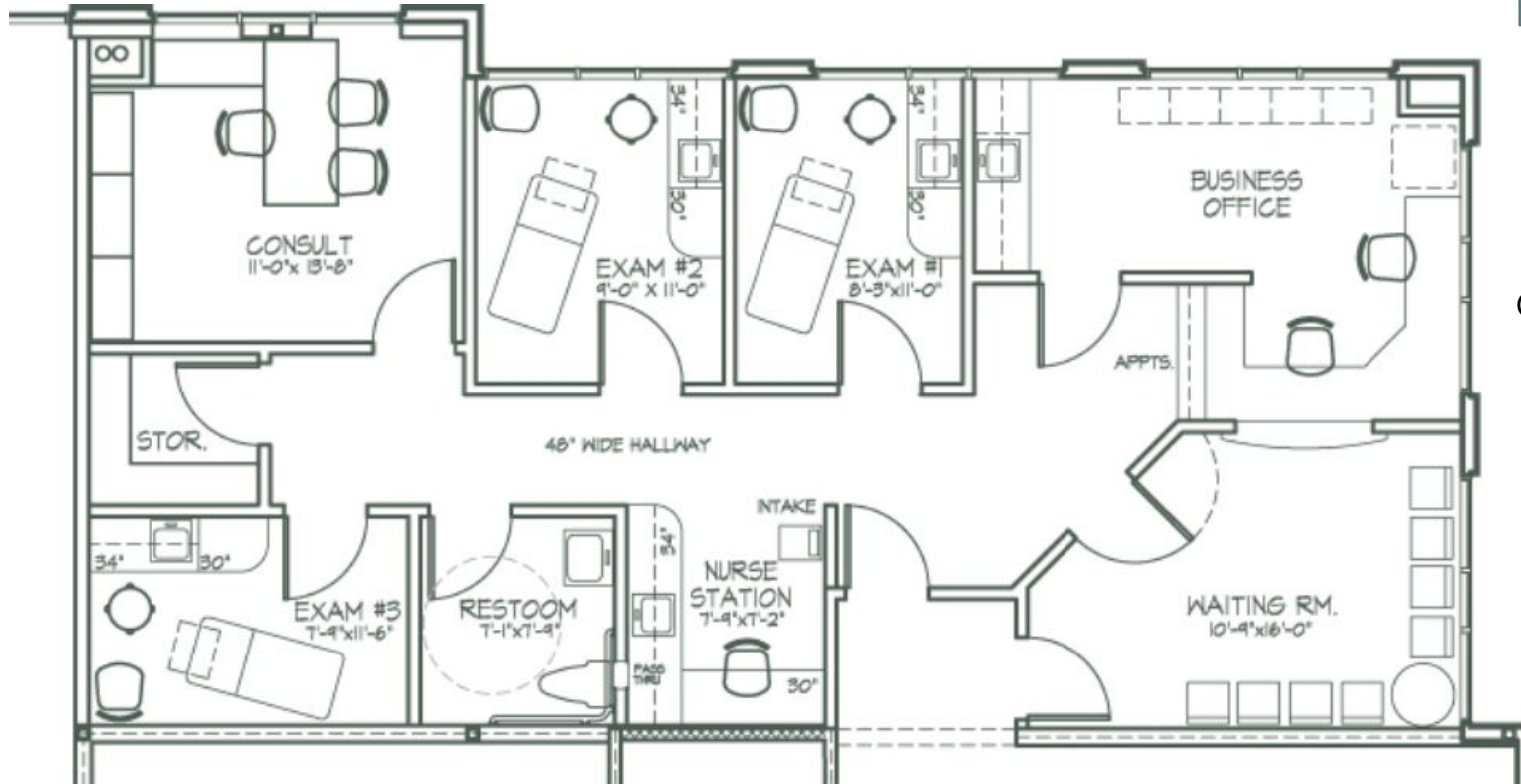
Chestnut Landing
Building B
Sample Build-out

MEDICAL/PROFESSIONAL SPACE AVAILABLE FOR BUILD OUT



Chestnut Landing
Building B
Sample Build-out

MEDICAL/PROFESSIONAL SPACE AVAILABLE FOR BUILD OUT



Chestnut Landing
Building B
Sample Build-out

Chestnut Real Estate | 810-599-3984 | ChestnutRealEstate.com
6253 Grand River, Ste 800 Brighton MI 48114