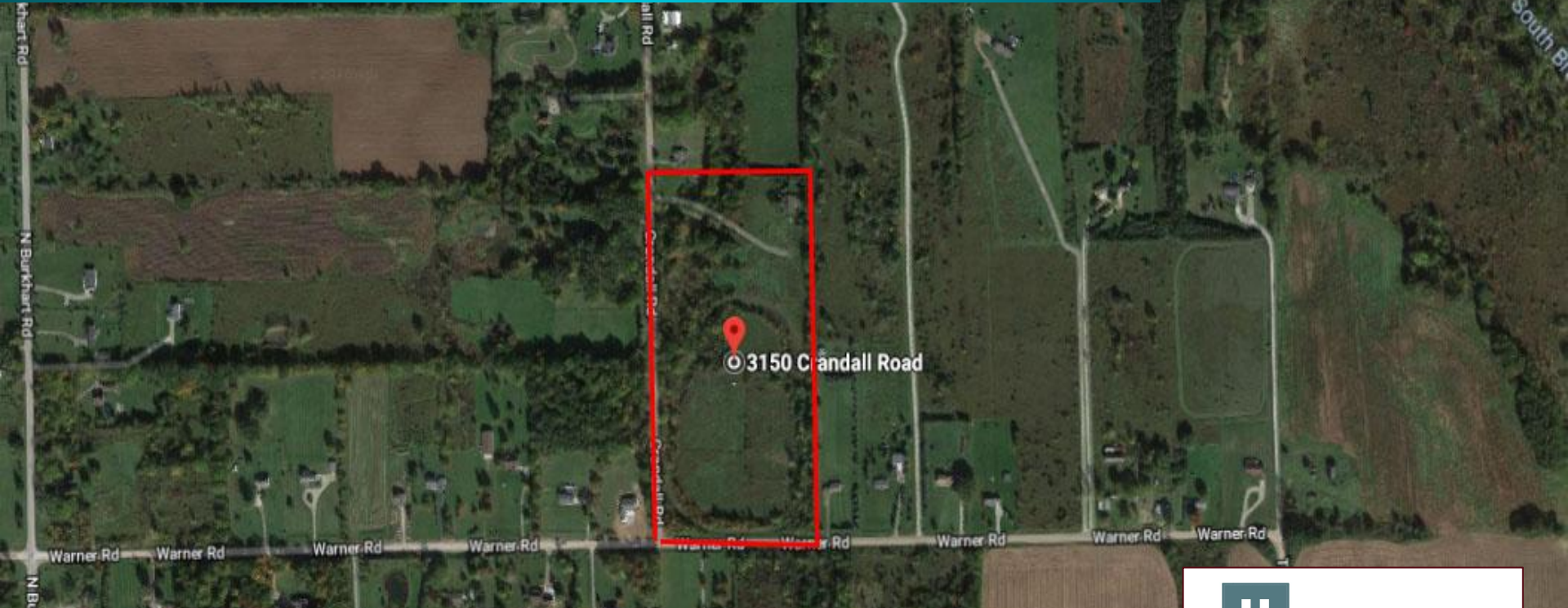


20 Acres Crandall RD. HOWELL, MI - FOR SALE



EXCLUSIVELY LISTED BY:
STEVE GRONOW
810-599-5147
Steve@chestnutrealestate.com

CHRISTIAN BUGEJA
810-217-1126
Christian@chestnutrealestate.com



Property Summary: Approx. 20 Acres Zoned SFR Crandall RD. | Howell, MI 48855



Asking Price: \$167,100 Includes 20 Water & Sewer REUs

Priced at: \$8,355/Unit

Property Highlights:

- Approx. 20 Acres
- Concept plan for 24 single family homes available
- Water and Sewer located along Warner
- 1.6 miles north of Grand River
- Zoning: SFR
- Terms: Cash at Sale
- Howell Schools District
- 2019 Approx. taxes \$18,660 includes assessment for water & sewer through 2026 and can be passed through to homeowner's annual taxes.

Property Details - 20 Acres, Crandall Rd. Howell, MI 48855



Additional Information: Low cost at \$8,355/Unit includes 20 Water & Sewer REUs. Utilities at site along Warner Rd.

Location Description: 1.6 miles N of Grand River, 2.5 miles to M-59, 2.8 Miles N of I-96

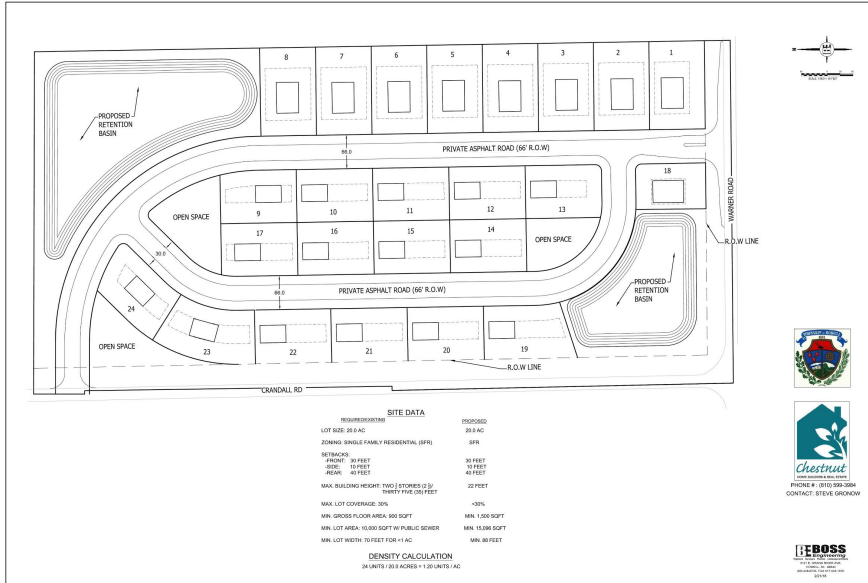
Tax ID: 4706-16-400-001

Legal Description: SEC. 16 T3N, R4E, W 1/2 OF SW 1/4 OF SE 1/4 20A

Taxes: 2019 Approx. taxes \$18,660 includes assessment for water & sewer through 2026 and can be passed through to homeowner's annual taxes.



Aerial View - 20 Acres Crandall Rd. Howell, MI 48855



Chestnut Real Estate | 810-599-3984 | ChestnutRealEstate.com
6253 Grand River, Ste 800 Brighton MI 48114

Demographics - 20 Acres Crandall Rd. Howell, MI 48855



Population	1 Mile	3 Mile	5 Mile
2017 Total Population:	529	11,662	29,810
2022 Population:	551	12,227	30,798
Pop Growth 2017-2022:	4.16%	4.84%	3.31%
Average Age:	40.50	40.10	39.10
Households			
2017 Total Households:	201	4,667	11,385
HH Growth 2017-2022:	3.98%	4.71%	3.30%
Median Household Inc:	\$69,843	\$57,827	\$64,531
Avg Household Size:	2.60	2.40	2.60
2017 Avg HH Vehicles:	2.00	2.00	2.00
Housing			
Median Home Value:	\$194,511	\$170,063	\$182,065
Median Year Built:	1985	1991	1988

Data from CoStar Realty Information Inc.