

20 Acres, Tooley RD. HOWELL, MI - FOR SALE

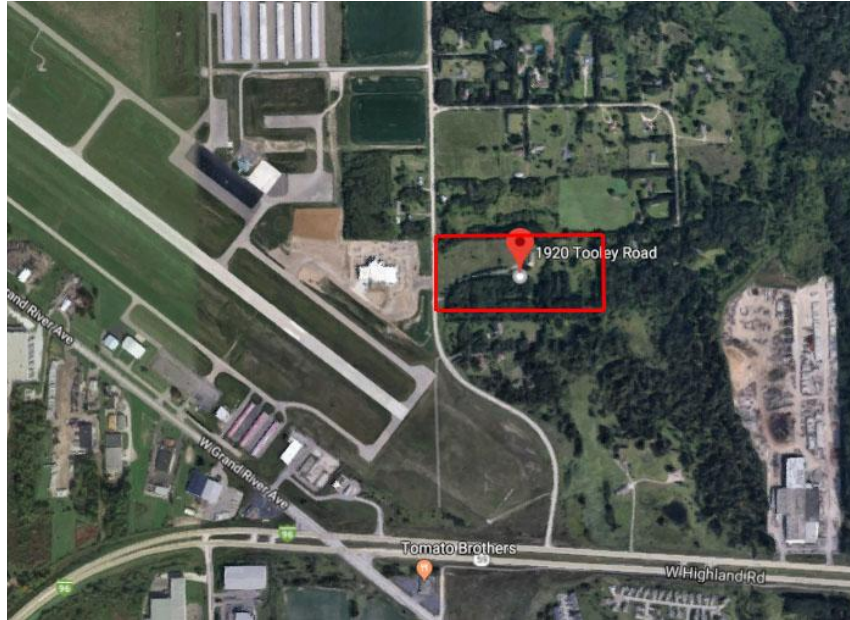


EXCLUSIVELY LISTED BY:
STEVE GRONOW
810-599-5147
Steve@chestnutrealestate.com

CHRISTIAN BUGEJA
810-217-1126
Christian@chestnutrealestate.com



Property Summary: Approx. 20 Acres Zoned SFR Tooley RD. | Howell, MI 48855



Asking Price: \$461,175 Includes 50 Water & Sewer REUs

Priced at: \$9,223.50/Unit

Property Highlights:

- Approx. 20 Acres
- Concept plan for Apartment Complex is available
- All utilities at site along Tooley Rd.
- .5 Miles north of M59/Grand River
- Zoning: SFR
- Terms: Cash at Sale
- Howell Schools District

Property Details - 22.83 Acres, Tooley & Bowen Rd. Howell, MI 48855



Additional Information: Low cost per at \$9,223.50/Unit at 50 units. Includes 50 Water & Sewer REUs. Utilities at site along Tooley Rd. Currently zoned SFR. Apartment complex concept plan is available for preview.

Location Description: .8 miles N of Grand River, .5 Miles of M-59, 1.7 Miles N of I-96

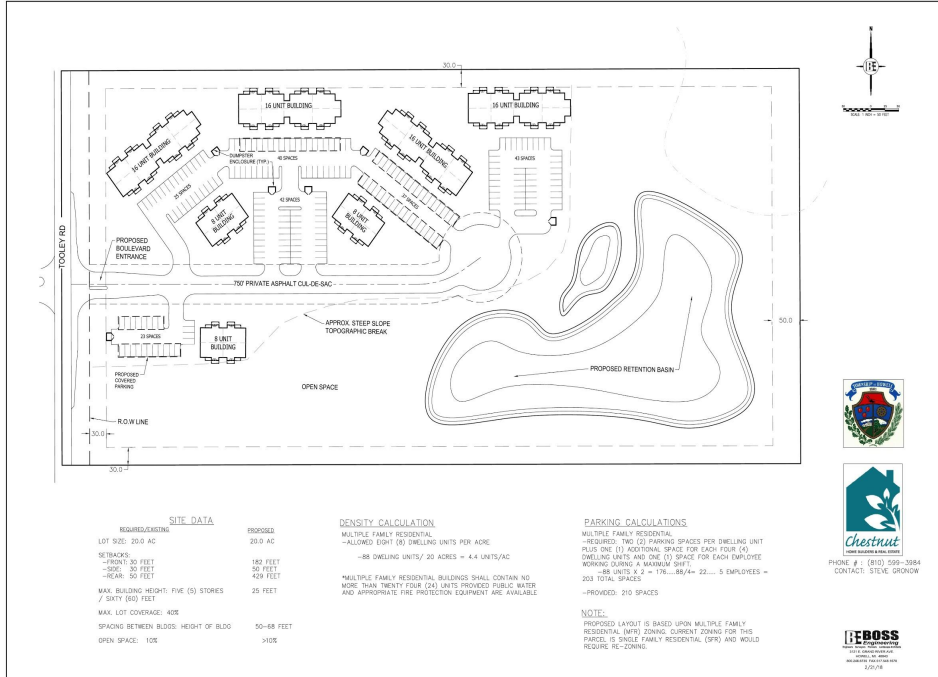
Tax ID: 4706-27-100-003

Legal Description: SEC. 27 T3N, R4E, N 1/2 OF NW 1/4 OF NW 1/4 20A.

Taxes: 2019 Approx. taxes \$39,450 includes assessment for water & sewer through 2026 and can be passed through to homeowner's annual taxes.



Possible Concept Plan- 20 Acres Tooley Rd. Howell, MI 48855



Demographics - 20 Acres Tooley Rd. Howell, MI 48855



Population	1 Mile	3 Mile	5 Mile
2017 Total Population:	1,987	18,117	31,347
2022 Population:	2,098	18,804	32,374
Pop Growth 2017-2022:	5.59%	3.79%	3.28%
Average Age:	40.40	39.30	38.90
Households			
2017 Total Households:	754	7,169	11,990
HH Growth 2017-2022:	5.70%	3.71%	3.29%
Median Household Inc:	\$65,491	\$57,129	\$64,859
Avg Household Size:	2.60	2.40	2.50
2017 Avg HH Vehicles:	2.00	2.00	2.00
Housing			
Median Home Value:	\$170,925	\$171,731	\$185,051
Median Year Built:	1993	1985	1989

Data from CoStar Realty Information Inc.

Chestnut Real Estate | 810-599-3984 | ChestnutRealEstate.com
6253 Grand River, Ste 800 Brighton MI 48114